

WSE-144

Wallmount Splice Enclosure

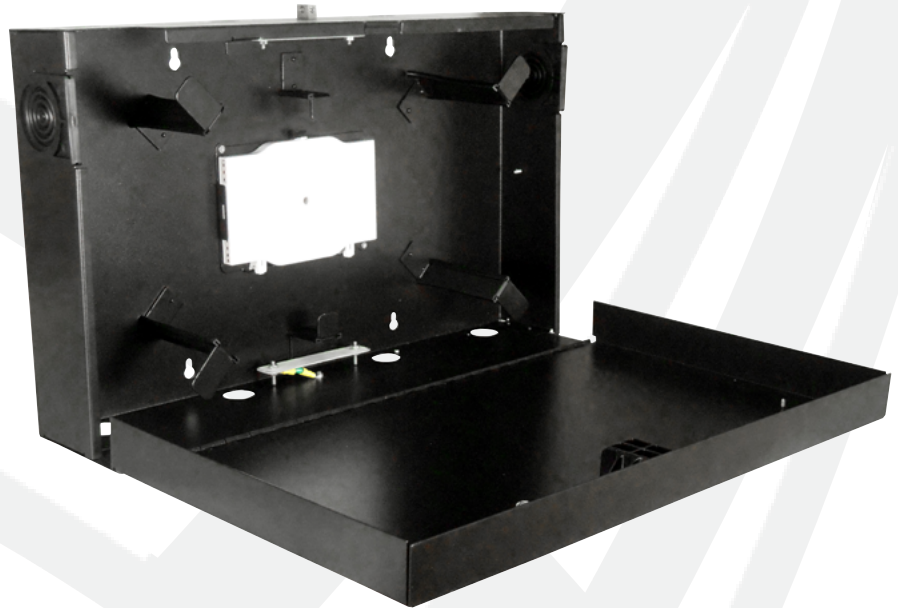
Headend/CO

FTTx

MDU

PON

Utility/Municipality



WSE-144 (shown with FST-ASF24 splice tray)

Indoor wall mount fiber optic splice enclosure to transition from OSP to premise optical cable. WSE provides storage and protection of fiber splices. The front door of the housing is a work surface that can support the weight of a fusion splicer.

Multiple NPT compatible cable entry/exit locations are provided on the top and bottom with grommets to prevent dust from entering the housing. Side entry grommets allow for easy mid-span access of pass through cables. Integrated ground is provided for proper grounding of armored cables.

KEY PRODUCT BENEFITS

- ▶ Small footprint
- ▶ Lightweight 0.60" aluminum with black powder coat finish
- ▶ Front door serves as splicer work surface with slam lock 216 tool compatible 3/8" hex head bolt and key lock for added security
- ▶ Side entry mid-span access
- ▶ 1 ea top and bottom NPT 1" compatible cable entry ports
- ▶ 3 ea top and bottom NPT 3/4" compatible cable entry ports
- ▶ 6 ea FST series splice tray capacity
- ▶ Integrated grounding bar with external ground lug

INDUSTRY STANDARDS

- ▶ NEMA 2, IP22

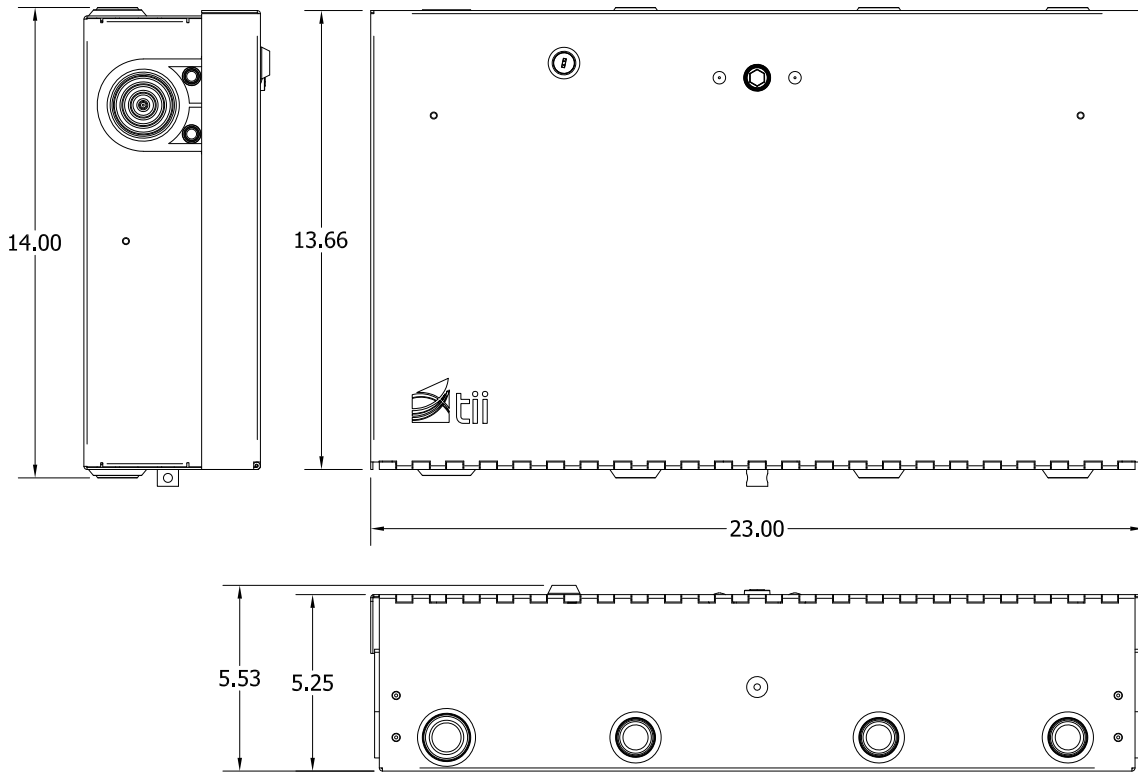


Tii Technologies Inc.

Corporate Headquarters:

141 Rodeo Drive
Edgewood, NY 11717
Phone: 631.789.5000
Fax: 631.789.5063
Toll Free: 888.844.4720
sales@tiitech.com

WSE-144



Dimensions are in Inches

ORDERING INFORMATION

Model No.	Description	Standard Pkg.
WSE-144	Wallmount Splice Enclosure 6 Splice Tray Capacity with 1 NPT-1" and 2 NTP 3/4" Cable Glands	1 ea. 26" x 17" x 9" - 15 lbs.

ACCESSORIES

Model No.	Description	Standard Pkg.
FST-ASF24	Splice Tray 24 Single Fusion	20 ea. 10" x 8" x 6" - 5 lbs.
FST-AMF06	Splice Tray 6 Mass Fusion (72 Fiber)	20 ea. 10" x 8" x 6" - 5 lbs.
KT-CG-NPT-1	Cable Gland NPT 1 inch (0.748 - 1.0")	10 ea. 12" x 8" x 5" - 3 lbs.
KT-CG-NPT-3/4	Cable Gland NPT 3/4 inch (0.512 - 0.709")	10 ea. 12" x 8" x 5" - 3 lbs.