

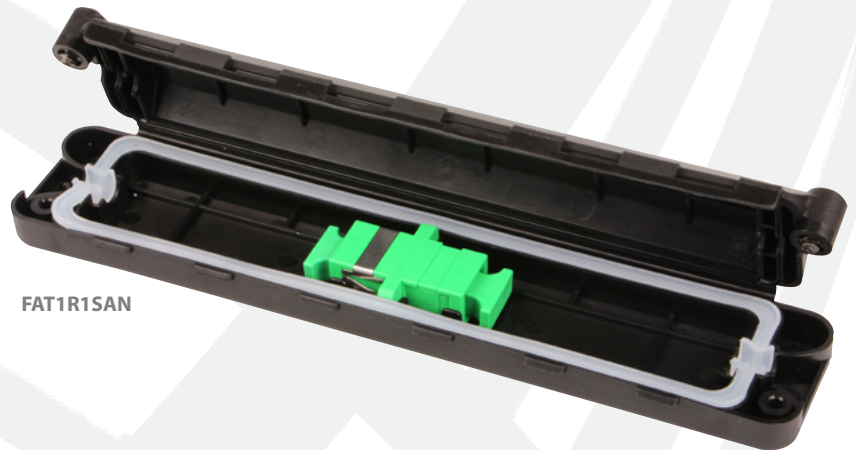
FAT1 Series

Fiber Access Termination Unit

CPE/Premise Wiring

FTTP

MDU



FAT1R1SAN

The FAT1 Series is a compact, outdoor wall mount fiber termination and distribution enclosure. This unit is typically used as an Optical Demarcation Point.

KEY PRODUCT BENEFITS

- ▶ Accommodates SC-UPC and SC-APC connectors
- ▶ Compact design can terminate 1 fiber connection
- ▶ Direct termination
- ▶ Wall mountable

INDUSTRY STANDARDS

- ▶ IP55 Rated



Tii Technologies Inc.

Corporate Headquarters:

141 Rodeo Drive
Edgewood, NY 11717

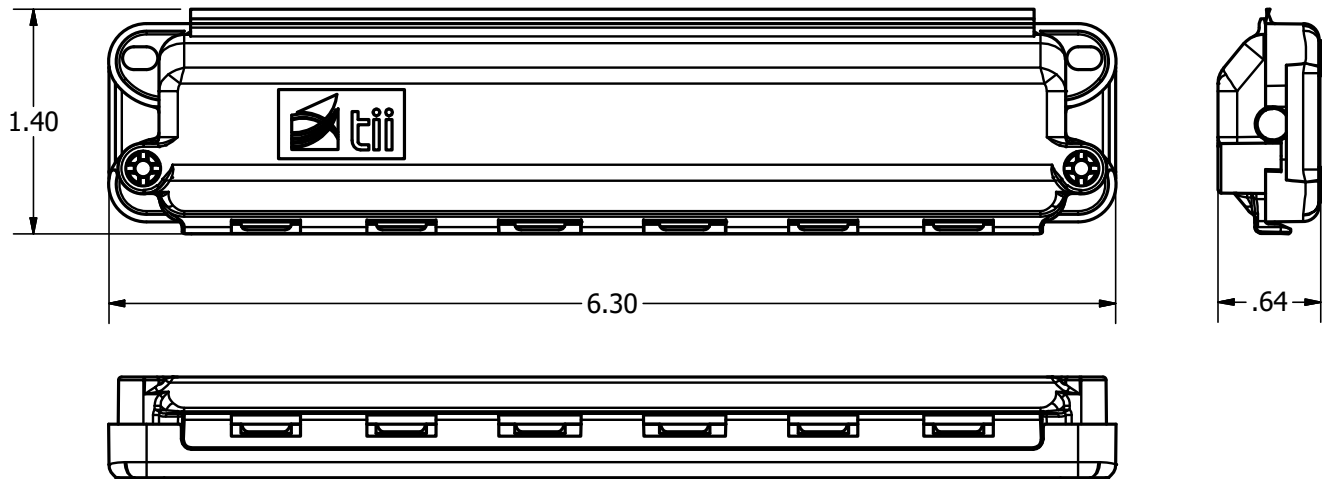
Phone: 631.789.5000

Fax: 631.789.5063

Toll Free: 888.844.4720

sales@tiitech.com

FAT1 Series



Dimensions are in Inches

SPECIFICATIONS

Property	Value
Interface	1 port SC-UPC or SC-APC
Physical Dimensions	1.37" (H) x 6.30" (W) x 0.63" (D)
Material	Molded Plastic, Black

ORDERING INFORMATION

Model No.	Description
FAT1R1SAN	1 Port Wall Terminal SC-APC
FAT1R1SCN	1 Port Wall Terminal SC-UPC