

## 231 Series

### Coaxial Satellite Dish Surge Protectors

CPE/Premise Wiring

DOT

Headend/CO

Utility/Municipality

Wireless



**Tii Technologies Inc.**

**Corporate Headquarters:**

141 Rodeo Drive  
Edgewood, NY 11717

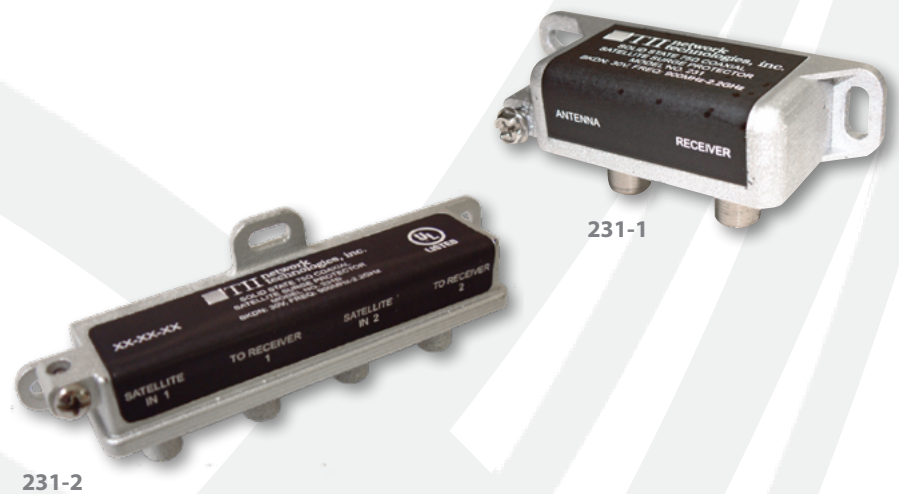
Phone: 631.789.5000

Fax: 631.789.5063

Toll Free: 888.844.4720

sales@tiitech.com

www.tiitech.com



The 231 Series Coaxial Surge Protectors are specifically designed for satellite dish installations. The 231 protects the satellite dish, the receiver and the antenna from lightning induced surges.

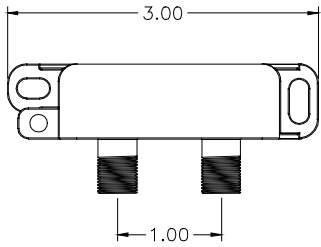
#### KEY PRODUCT BENEFITS

- ▶ Protects satellite receivers
- ▶ Unique strip line design is impedance matched to 75 ohms and is completely transparent to all signals transmitted from 0.9 to 2.2 GHz
- ▶ DC breakdown voltage of the protector is designed to protect against even the smallest transient surges, yet is compatible with powered satellite dish receivers
- ▶ Metallic housing provides EMI shielding
- ▶ Available with single or dual LNB connections
- ▶ Environmentally sealed against moisture and humidity

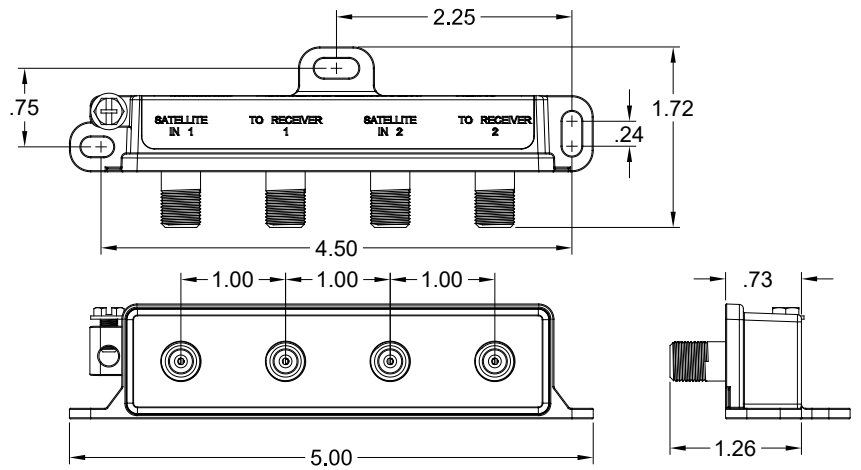
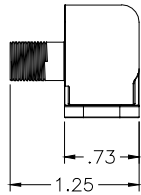
#### INDUSTRY STANDARDS

- ▶ Listed to UL 497C

# 231 Series



231-1



231-2

Dimensions are in Inches

## SPECIFICATIONS

### SATELLITE CABLE PROTECTION

DC Breakdown	< 30 V
Surge Voltage @ 100V/μs	< 40 V
Insertion Loss (900MHz-2.2GHz)	< 0.5 dB
Return Loss (900MHz-2.2GHz)	18 dB Typical

## ORDERING INFORMATION

Model No.	Description
231-1	One Line Coaxial Satellite Dish Surge Protector
231-2	Two Line Coaxial Satellite Dish Surge Protector

INFORMATION CONTAINED IN THIS PUBLICATION IS PROVIDED ONLY FOR YOUR CONVENIENCE AND IS SUBJECT TO CHANGE WITHOUT NOTICE. TII TECHNOLOGIES MAKES NO REPRESENTATIONS OR WARRANTIES OF ANY KIND WHETHER EXPRESS OR IMPLIED, WRITTEN OR ORAL, STATUTORY OR OTHERWISE, RELATED TO THE INFORMATION, INCLUDING BUT NOT LIMITED TO ITS CONDITION, QUALITY, PERFORMANCE, MERCHANTABILITY OR FITNESS FOR PURPOSE; AND TII TECHNOLOGIES DISCLAIMS ALL LIABILITY ARISING FROM THE USE OF THIS INFORMATION.