

141 Rodeo Drive
 Edgewood, NY 11717
 Phone: 631.789.5000
 Fax: 631.789.5063
 Toll Free 888.844.4720
 sales@tiitech.com
 www.tiitech.com

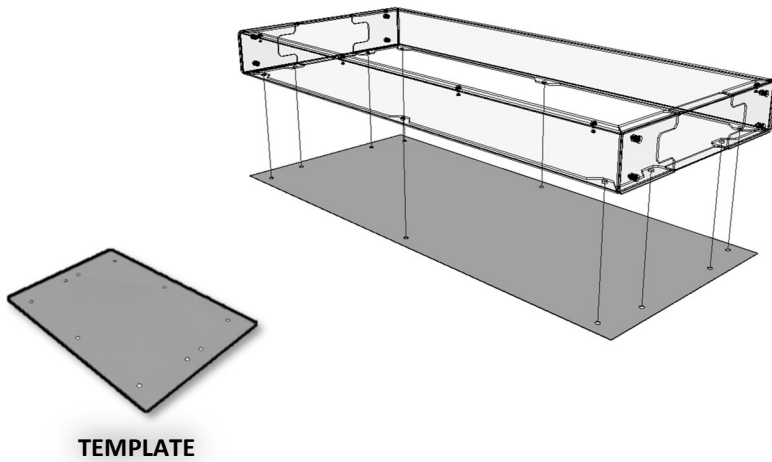
INSTALLATION NOTES



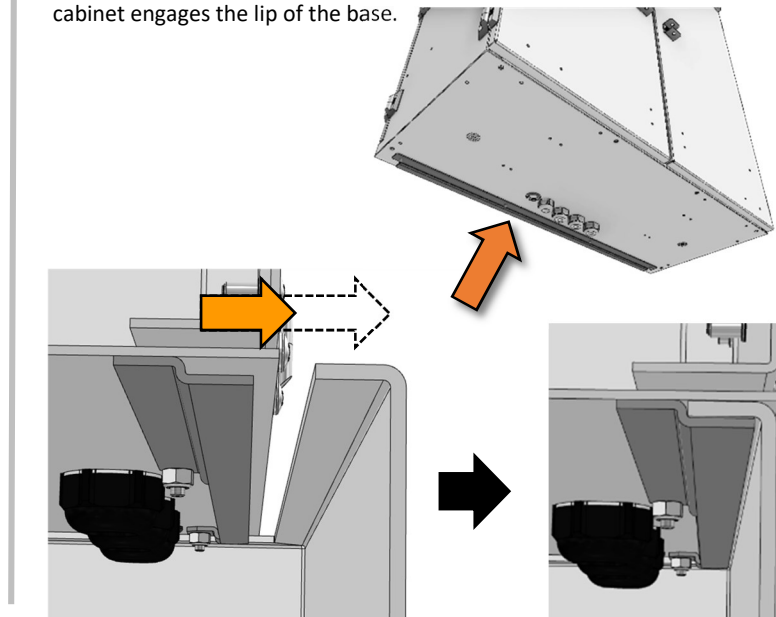
MODEL: FDH8 MODULAR SPLITTER CABINET

1. PAD MOUNT

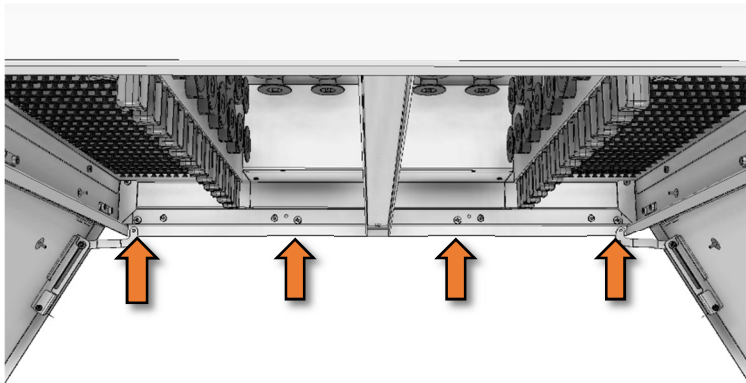
1.1 Use provided template to drill concrete pad and install anchors in the right locations. Attach cabinet base to previously installed anchors. Holes on mounting base can accommodate 3/8" or 5/16" mounting bolts.



1.2 Slide cabinet over mounting base so the bracket on the back of the cabinet engages the lip of the base.



1.3 Secure with 3 screws from inside the cabinet as indicated above.

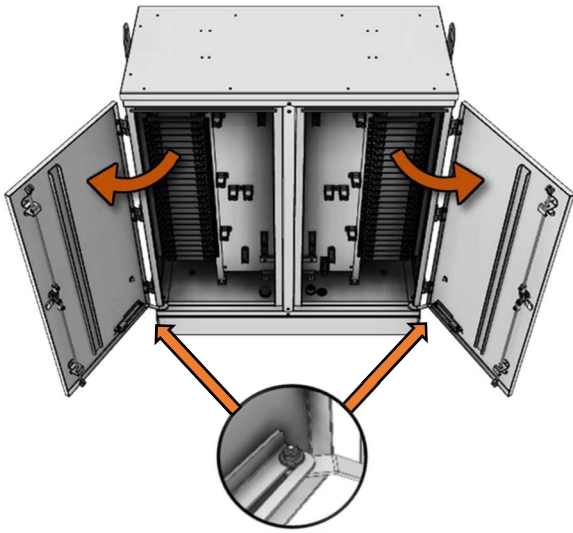


2. GROUNDING THE CABINET

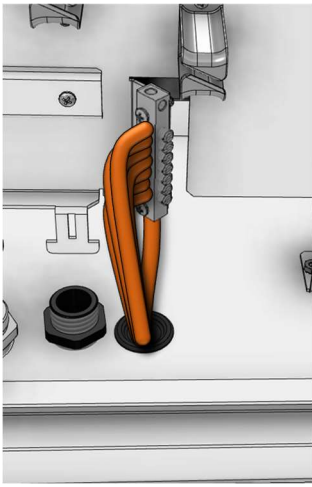
2.1 Open the back side doors with 216 tool.



2.2 Open the doors until the locking pin snaps into their secure position

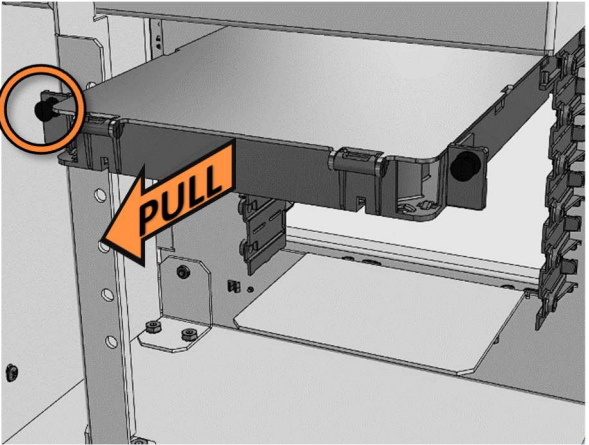


2.3 Bring grounding cable thru provided hole on bottom of cabinet, and securely fix to grounding bar.

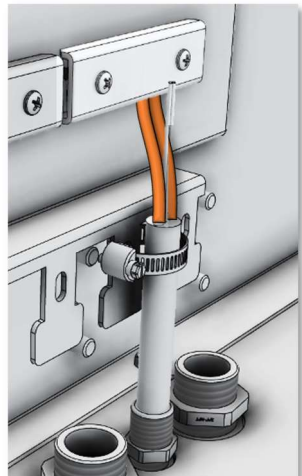
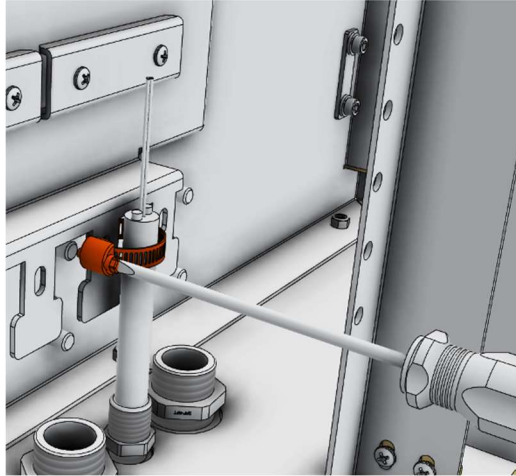


3. ADDING/SPLICING TO/ SERVICING A CASSETTE

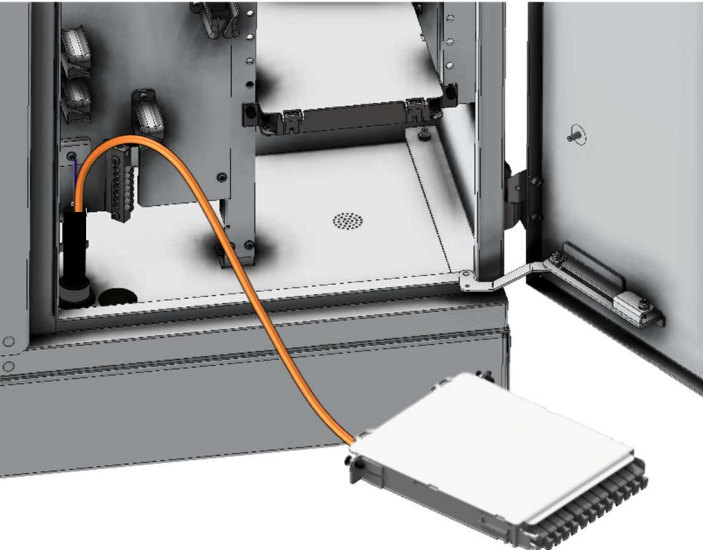
3.1 Remove the feeder cassette by releasing the mounting pin (located on the far side behind the cassette as shown), slide the cassette rearward, and remove the cassette through the side door opening.



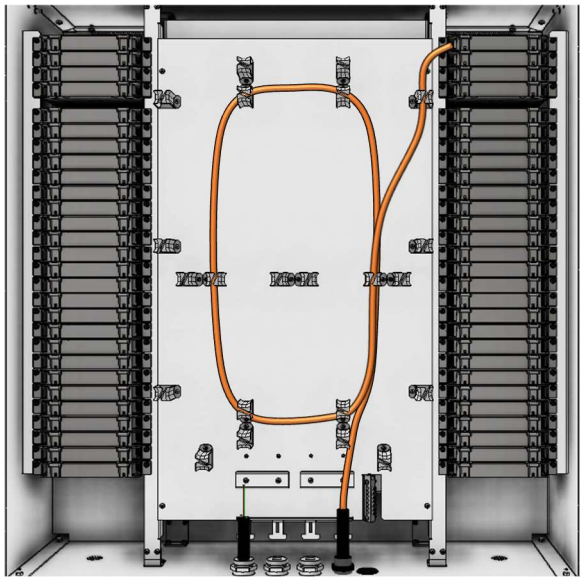
3.2 Insert feeder cable thru small cable port, tighten external nut, secure jacket with hose clamp and fix strength member as indicated.



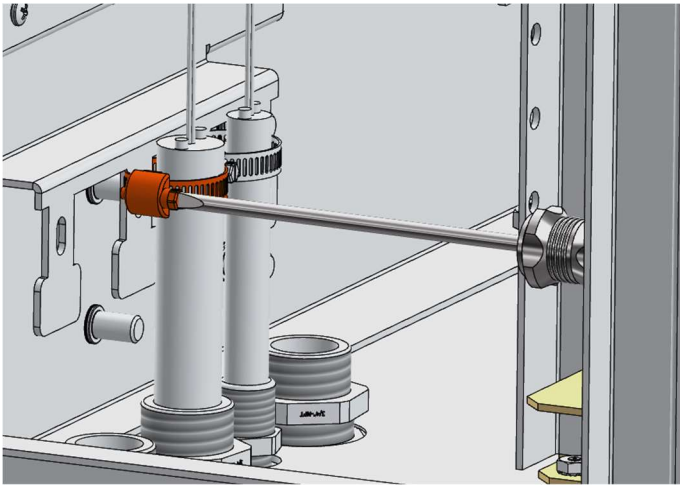
3.3 Make all required fusion splices inside feeder cassette.



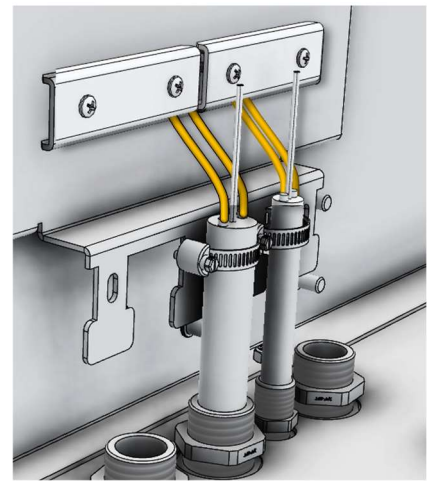
3.4 Store feeder cable slack on provided cable management clips. Mount feeder cassette back and secure in place with push pin.



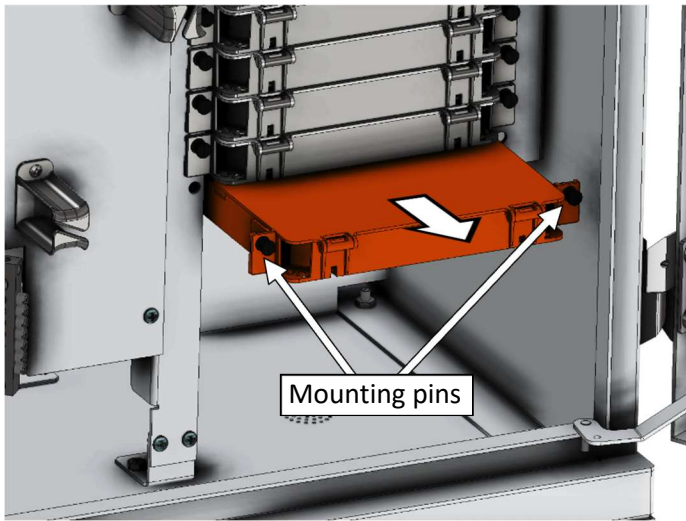
3.5 Insert distribution cable thru large cable port, tighten external nut and secure jacket with hose clamp.



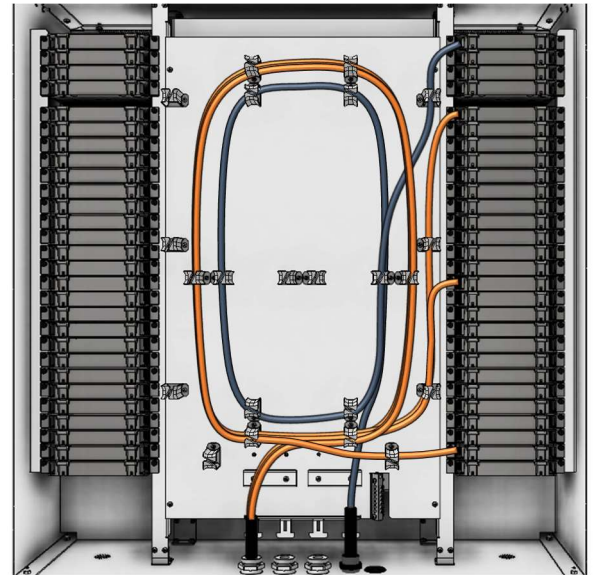
3.6 Lay strength member on back panel and clamp with provided bracket.



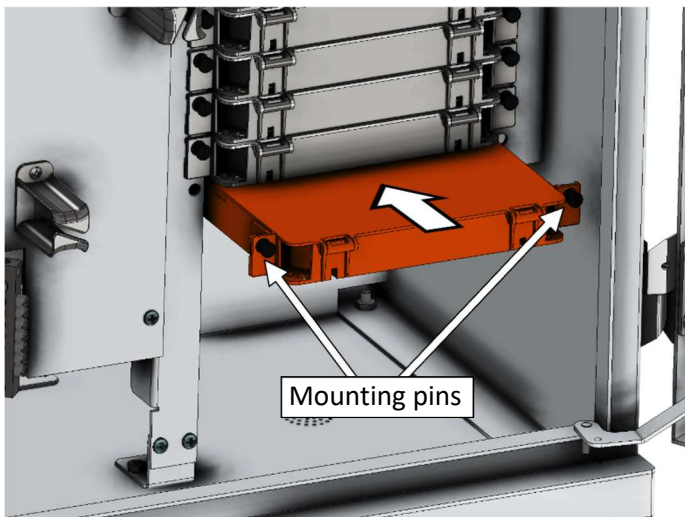
3.7 Remove the distribution cassette by releasing the mounting pins (located on both sides behind the cassette as shown), slide the cassette rearward.



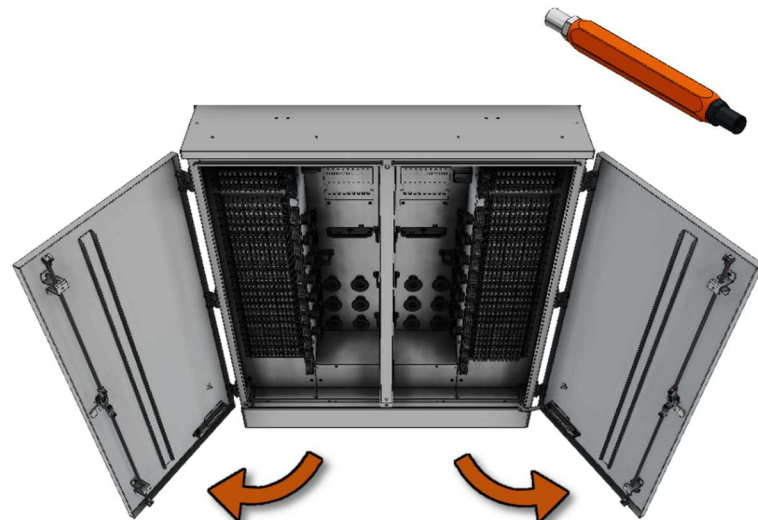
3.8 After making required splices inside of cassettes, manage distribution cables on provided management clips.



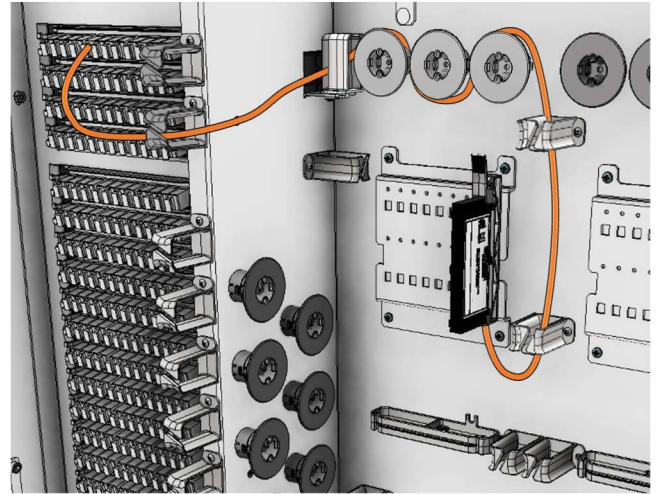
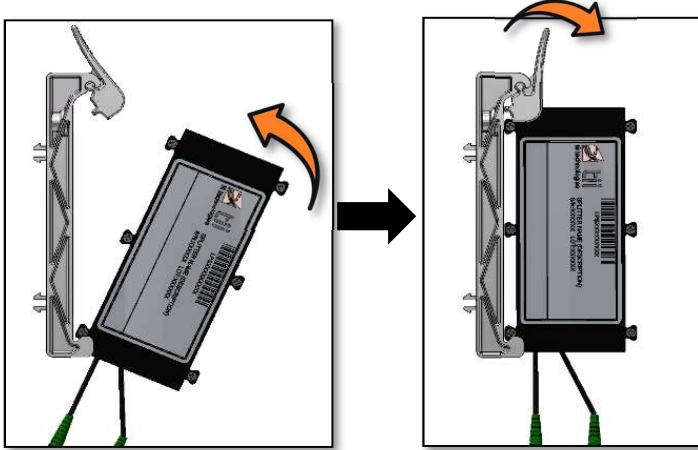
3.9 Reinstall cassettes by sliding into cabinet adapter first, rotating adapters towards front of cabinet, and securing into position by pressing the mounting pins.



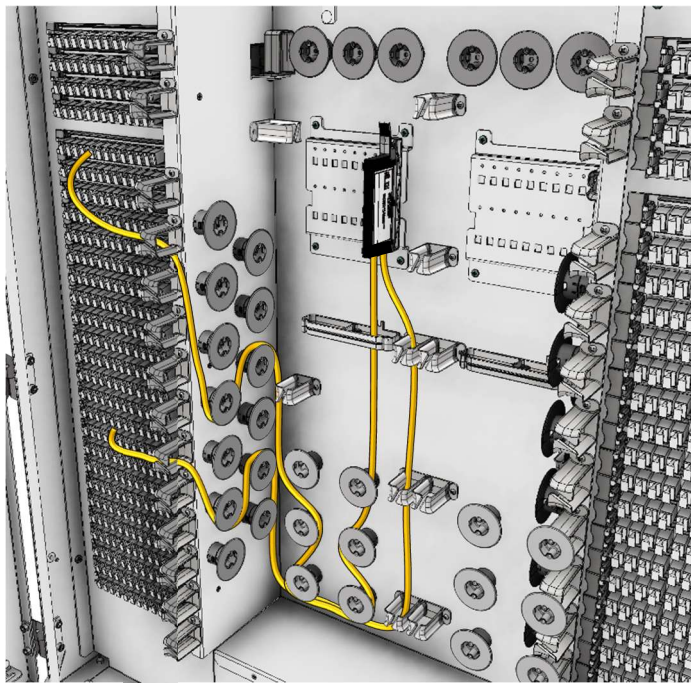
4. FOR SPLITTER INSTALLATION



4.3 Connect splitter input legs to desired adapters on input area and route cable using the provided management clips as needed.



4.4 Connect splitter distribution legs to desired adapters on distribution field and route cable on provided management clips as needed.



4.5 Store unused splitter legs using the provided management clips as indicated below.

