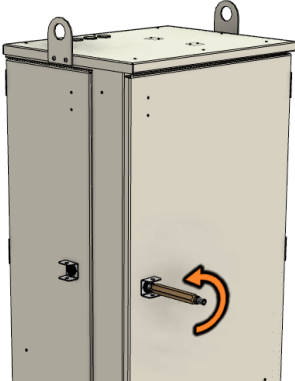


141 Rodeo Drive Edgewood, NY 11717
 Phone: 631.789.5000 | Fax: 631.789.5063 | Toll Free: 888.844.4720
 sales@tiitech.com

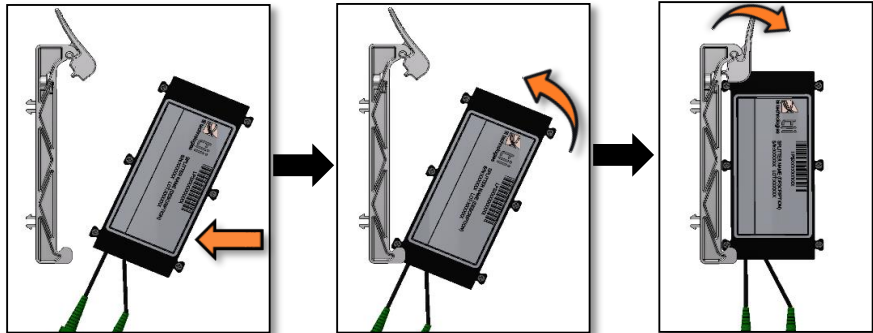
www.tiitech.com

SPLITTER INSTALLATION AND ROUTING

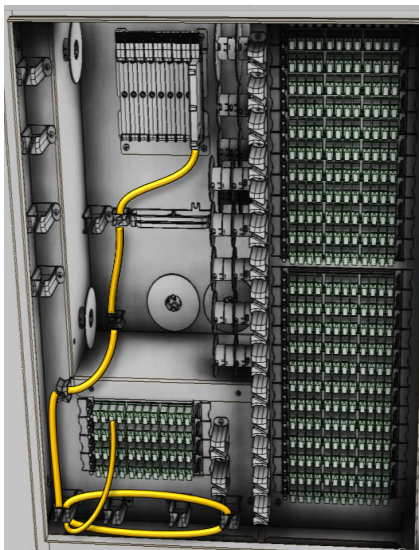
1. Open front door with 216 tool.



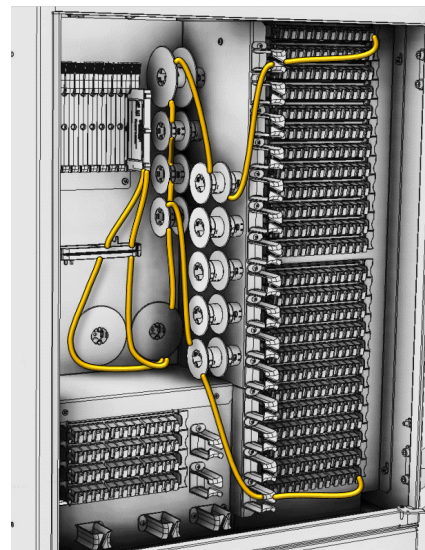
2. To install splitter onto mounting bracket, push top of mounting clip toward rear of cabinet. Catch bottom of splitter on bottom bracket and push top of splitter against top clip until it snaps into place.



3. Connect splitter input legs to desired adapters on input area and route cable using the provided management clips as needed.



4. Connect splitter distribution legs to desired adapters on distribution field and route cable on provided management clips as needed.



5. Store unused splitter legs using the provided management clips as indicated above.

