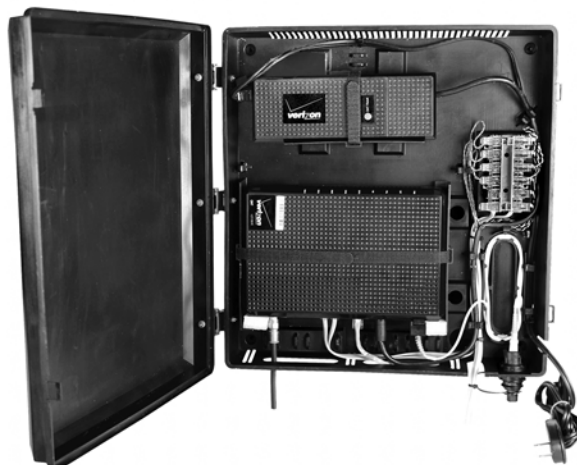


ONT-ENC

Indoor Enclosure for ONT & Power Adapter



141 Rodeo Drive
Edgewood, NY 11717
Toll Free 888.844.4720
www.tiitech.com



ONT-ENC

Optional Slack Storage Tray
ONT-SSENC1

Optional DIN Cable
ONT-PA-DIN

Installation Note

Description

1. The ONT-ENC Indoor Enclosure may include TII 68M Block.
2. Adjustable sliders for both the ONT and Power Adapter provide ease of installation for approved components.
3. The Equipment Cabinet is intended to house or mount certified equipment that is provided with its own fire and electrical enclosure.

Installation

1. Mount the ONT-ENC Indoor Enclosure to any suitable surface with screws (not included). Recommended screw size: #10 x 1 1/2" pan head self-tapping to be used in conjunction with plastic wall anchors.

CAUTION: Disconnect power before installing/removing cables. Use UL listed cable suitable for the application and National Electrical Code for all wiring to this unit.

2. Install the approved ONT and Power Adapter in the locations shown. Use the adjustable slide mechanism and Velcro straps to secure components to the base of the enclosure.
3. Terminate any appropriate cables from the Power Adapter to the ONT. Route cables through loom and strain relief clips as required.
4. Complete all other connections and test unit according to approved work instructions.

Features

Figure 1

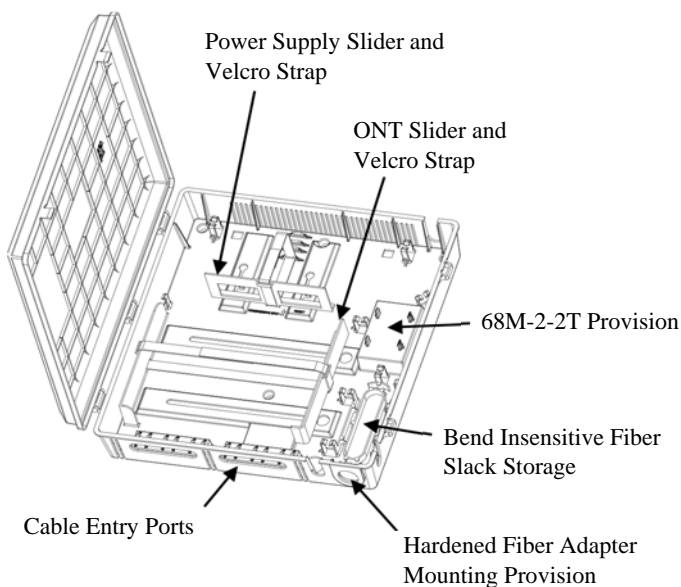
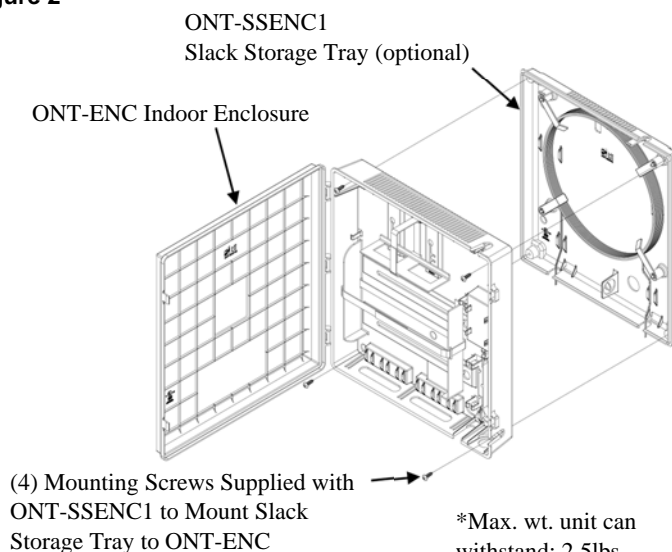


Figure 2



*Max. wt. unit can withstand: 2.5lbs